

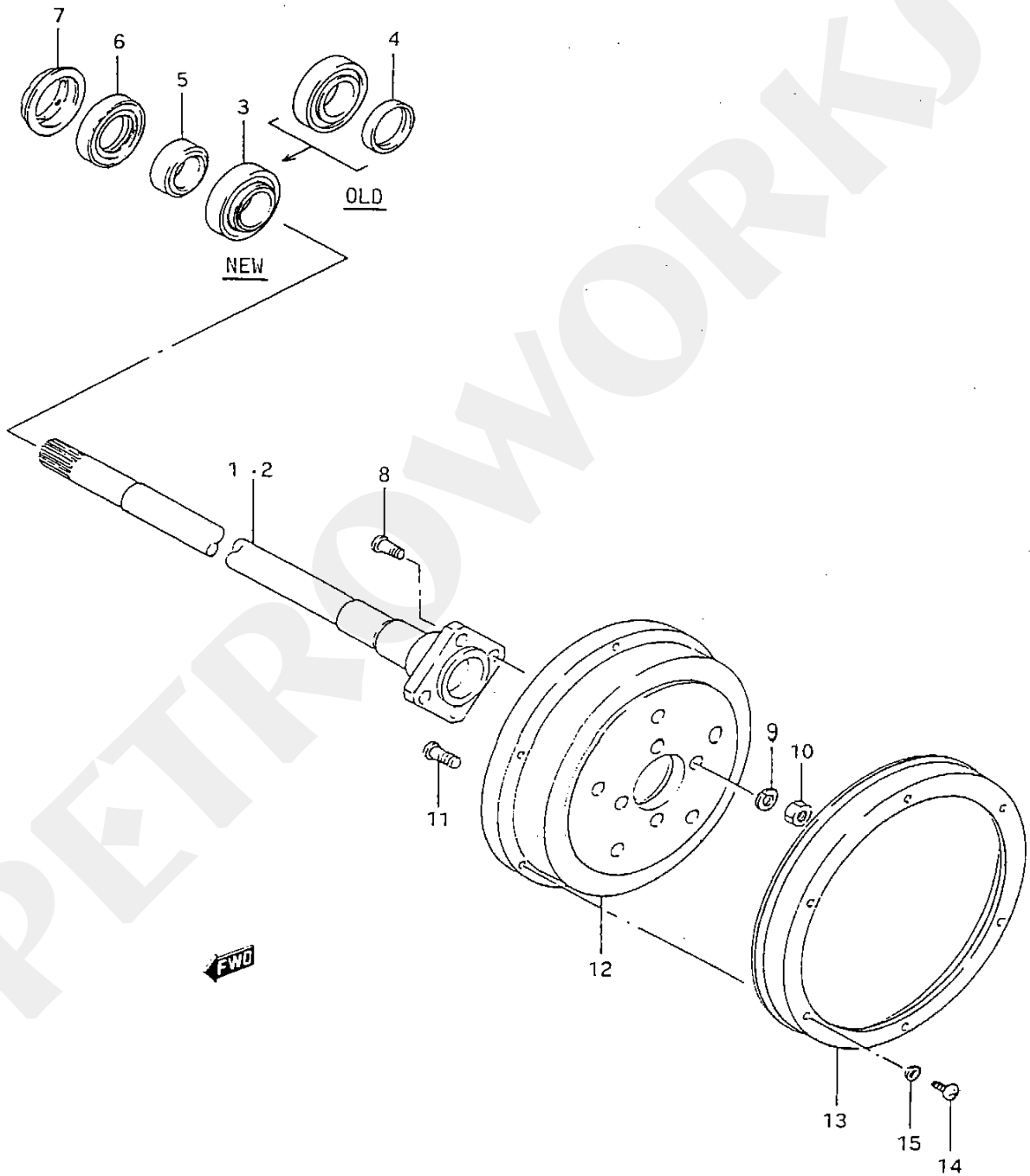


# PETROWORKS

## OFF-ROAD PRODUCTS

[www.petroworks.com](http://www.petroworks.com)

### Rear Axle Figure 50



SAMURAI E33

## Technical Note

When replacing the rear axle bearing it is nearly impossible to remove the bearing and retainer with a bearing puller. The easiest way is to use a hi-speed cutoff tool and cut the retainer and bearing free then press on the new bearing and retainer.

The old style bearing used to require the use of a spacer, but the new version has the retainer built into the bearing.

For a quick on the trail rear axle shaft fix, the rear brake backing plate can be modified to use a SJ410 bearing retainer to allow quick removal of the axle shaft without having to disconnect the break lines.

### [SJ410 Backing Plate](#)

*When doing this conversion you will need to replace the bearings on both the existing shaft and replacement shaft and will need a backing plate for each setup. This is because the SJ410 Backing plate is held in place by the bearing being pressed on.*

### [Rear Axle Rebuild Kit](#)

New Wheel Studs are available AXL-1602