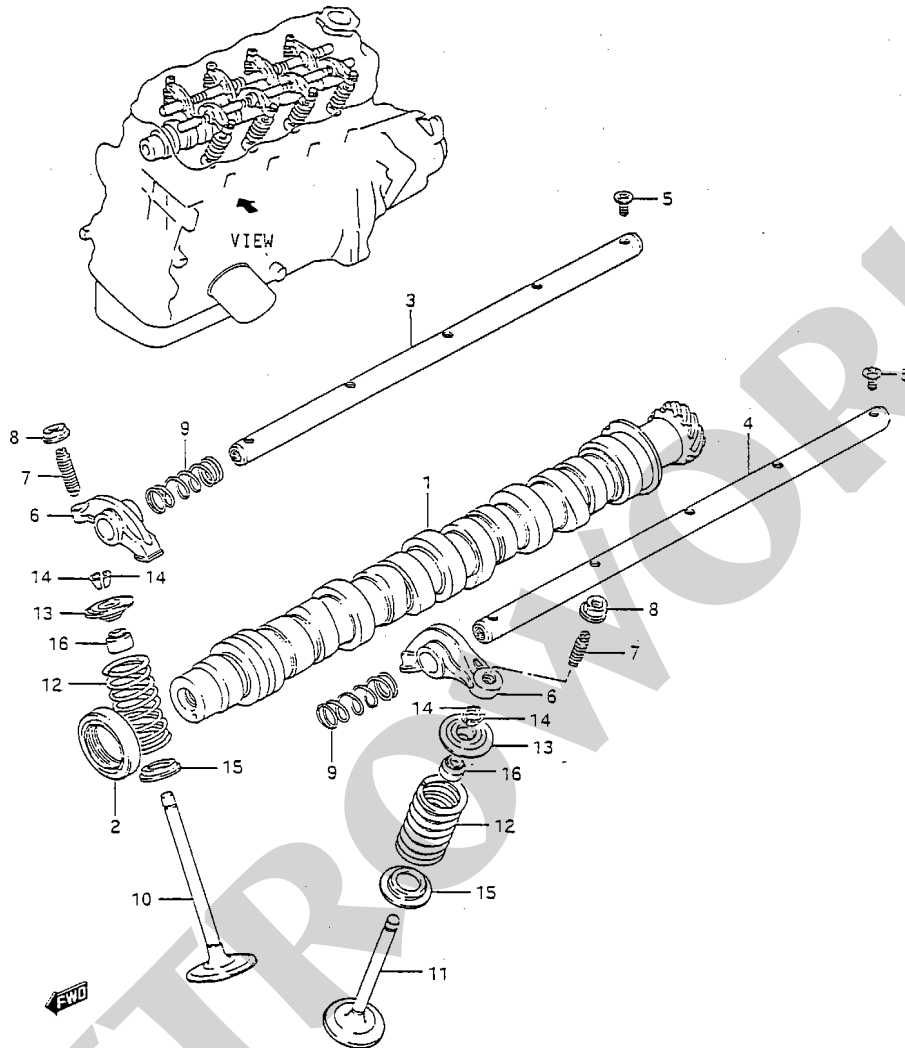


CAM Shaft and Valve Figure 7



SAMURAI E33

Petroworks Maintenance Tip

Whenever you adjust your valves, check the screws on the ends of the rocker arm shafts to be sure they're tight. If the screws get loose, you'll have a drop in oil pressure. If one of them finds its way under a cam lobe, the cam will drive the screw through the top of the head into the water jacket. Not a pretty picture!